

正样
2023.09.26
B00

Copyright: Copyright infringement reserved

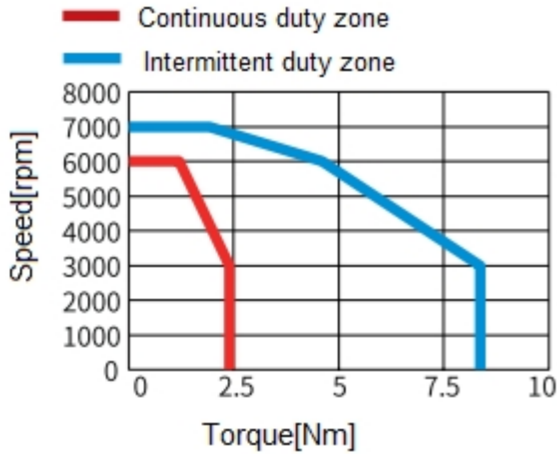
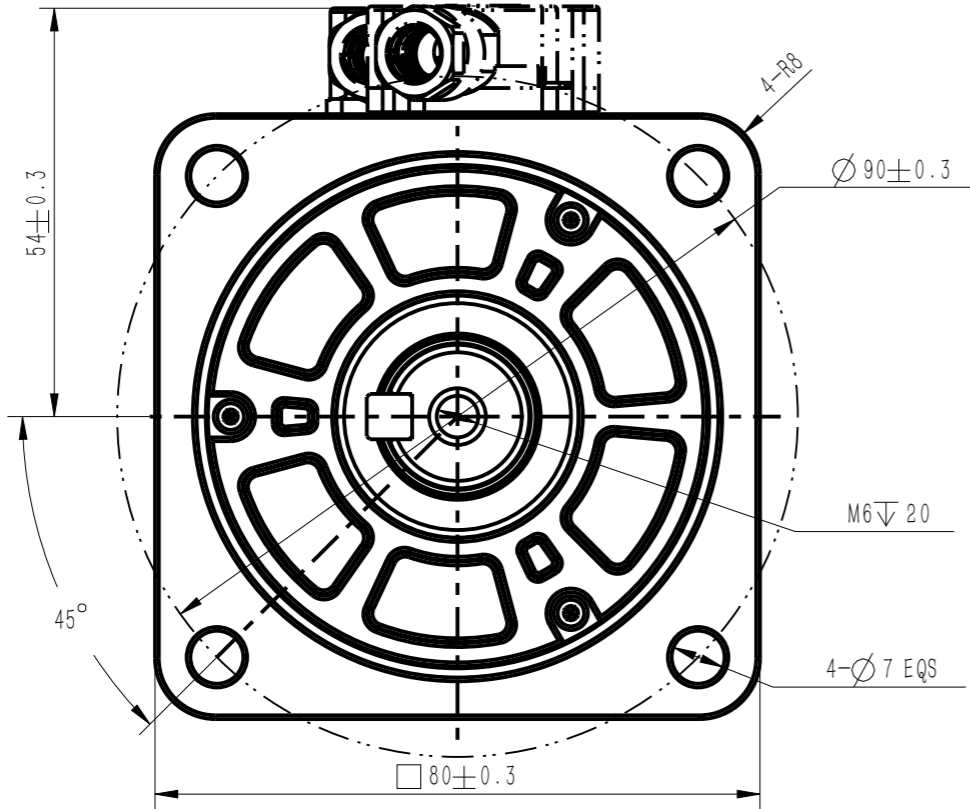
INOVANCE

F

A3

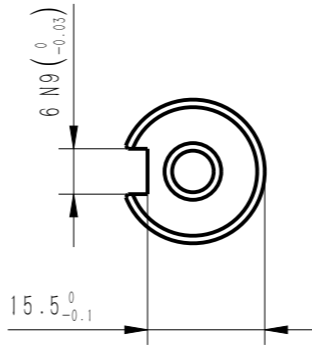
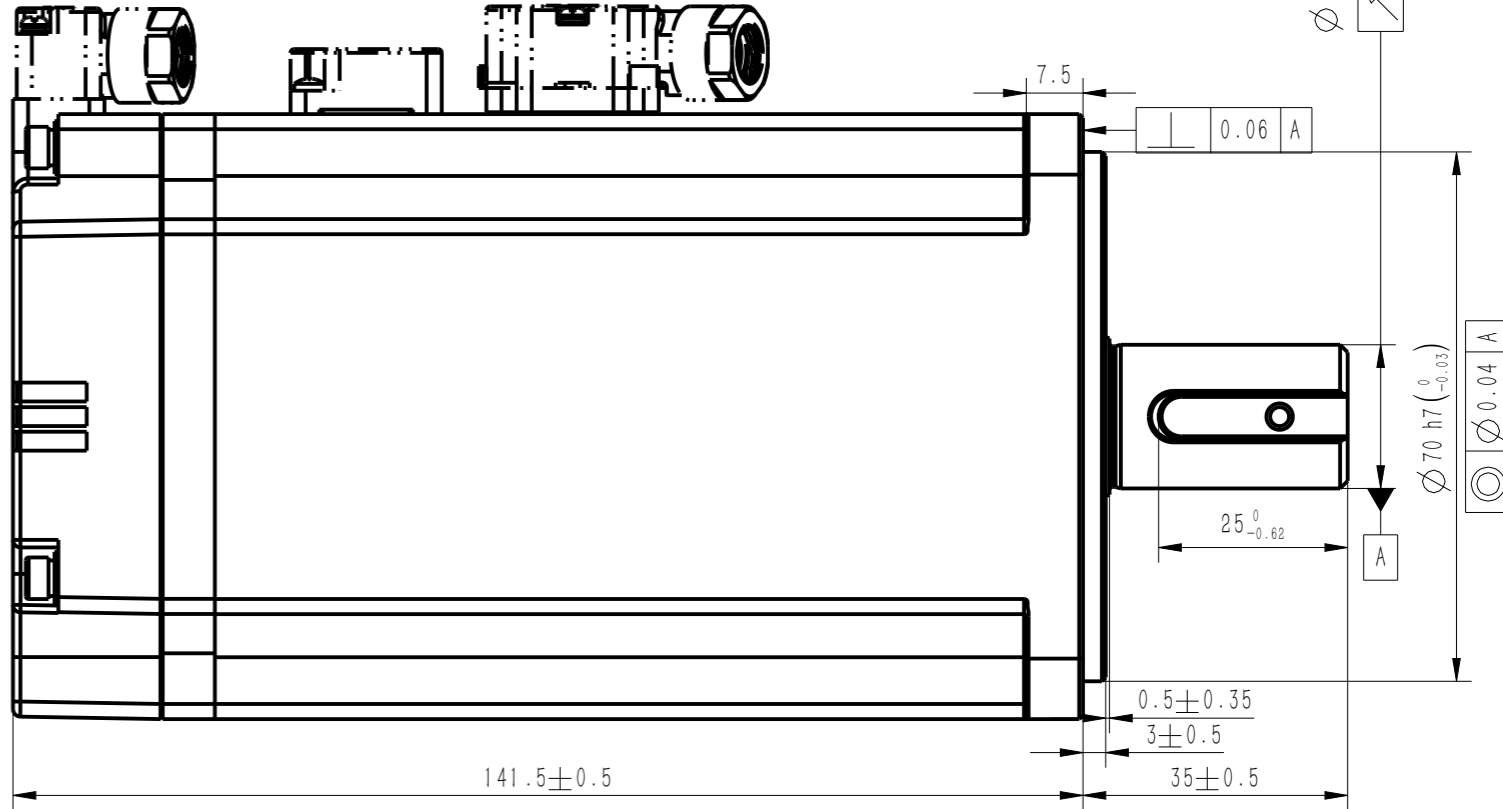
Amendment	Description

Unit: Millimeter (mm)

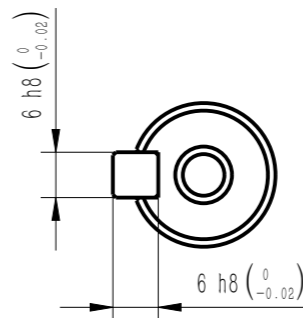


Basic function parameters	
Rated power KW	0.75
Rated voltage V	220
Rated current A	≤4.4
Peak current at rated speed A	≤16.9
Rated torque Nm	2.39
Peak torque at rated speed Nm	8.36
Rated speed rpm	3000
Max speed rpm	7000
Rotor inertia kg·cm2	0.71
Encoder resolution	26bit
Insulation class	F
Protection level	IP67
Static torque of brake Nm	≥3.2
Brake power supply	24
Duty cycle	S1
Radial line load N	≤392
Axial load N	≤147

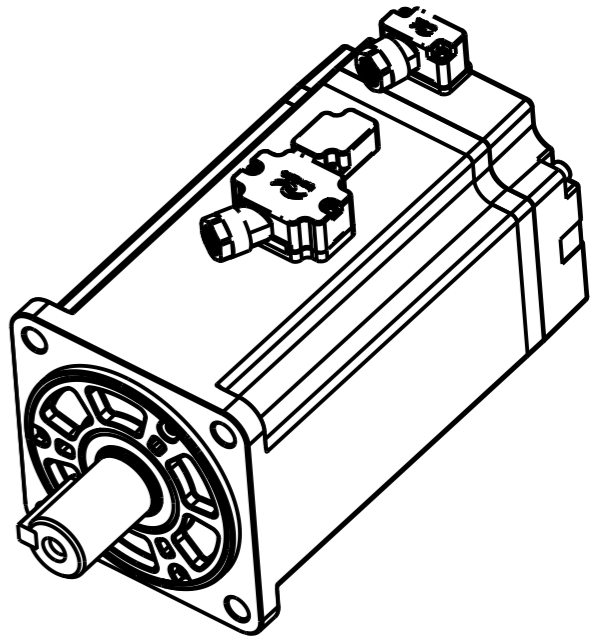
外部公开




Dimension of shaft end



Dimension of shaft end with key



				Motor Outline Drawing			01118373-WX	
B00	New Archive	/	20230828					
Version	Change method	Changed by	Date				<div>Mark</div> <div> INOVANCE</div>	
Design	/							
Check	/							
Craft	/							
Verify	/			Weight	Scale	Version	Page 1 of 1	
Standardization	/			2.88kg	1:1	B00	Model	MS1H1-75B30CB-S634R-INT
Approve	/							